

More universal than ever.
The first VivaPen[®]
with dual-cure power.

Adhese[®] 2

Universal adhesive
in the efficient
VivaPen

NEW

Universal bonding – redefined

Adhese[®] 2 is a universal adhesive with light- and dual-cure properties for direct and indirect restorations.

The innovative blue DC cannula^[1] enables, for the first time, dual-cure applications directly from the unique VivaPen[®]. This innovation broadens the clinical use of the adhesive, specifically in situations where light access is limited^[2].

Your benefits at a glance:

- ✓ Universally suitable for direct and indirect bonding procedures
- ✓ Compatible with all etching protocols
- ✓ Suited for light-cure and dual-cure^[2] applications – offering more flexibility and reliability, even in cases with limited light access
- ✓ Consistent high bond strength (> 25 MPa) on dentin and enamel^[4]
- ✓ Integrated desensitizing effect for minimizing the risk of postoperative sensitivities
- ✓ Free of Bis-GMA
- ✓ Efficient and cost-effective VivaPen: up to four times more applications per ml compared with conventional bottles^[5,6]

Fast and controlled intraoral application^[3]

Flocked tip with integrated co-initiator

Exchangeable and bendable cannula for easy access to all areas of the mouth and all cavity sizes

Click & bond: precise, economical dispensing with the proven click mechanism

Unobstructed view of the operating field during application

Convenient fill level indicator

New:

Blue DC cannula^[1] for reliable dual-cure applications

[1] DC = dual-curing.

[2] Dual-curing (light- and self-curing) only in conjunction with the blue DC cannula and dual-curing core build-up or luting composites.

[3] A protective sleeve must be used for intraoral applications.

[4] In combination with Tetric plus Fill, Tetric plus Flow and Variolink Esthetic DC.

[5] Berndt & Partner, VivaPen Benchmarking Study, Study Report, April 2022.

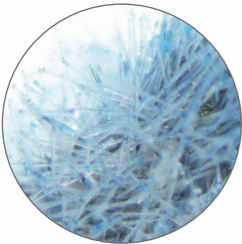
[6] Holaschke S, VEA Verification Report, Ivoclar Vivadent, 2021.

Dual-cure – directly from the VivaPen®

The blue DC cannula – all-round solution for maximum clinical flexibility

Thanks to the innovative blue DC cannula [7], Adhese® 2 enables reliable dual-cure application directly from the VivaPen® [8], making it suitable for both light-curing applications and clinical cases where effective light polymerization cannot be guaranteed, such as the adhesive cementation of indirect restorations.

With
integrated
co-initiator



The tip of the blue DC cannula is coated with a **co-initiator for self-curing**. Additionally, no separate dual-cure activator is required for compatibility with self- and dual-cure composites.



The black LC cannula [7] for cases with sufficient light polymerization

The proven black LC cannula is suitable for light-cure only applications, for example in direct restorative procedures or when sufficient light polymerization is guaranteed. For light-curing applications, both LC and DC cannulas provide the same performance and equally reliable results.



Overview of applications

	DC cannula	LC cannula
Direct restorations (light-cured)	✓	✓
Indirect restorations (light-cured)	✓	✓
Indirect restorations (self-cured)	✓ [9]	–
Root canal posts (self-cured)	✓ [9]	–

[7] DC = Dual Cure, LC = Light Cure.
[8] Only in combination with dual-curing luting composites.
[9] Applies to the etch-and-rinse technique (Total Etch, TE).
In combination with Variolink Esthetic DC, compatible with all etching protocols.

Quality you can rely on

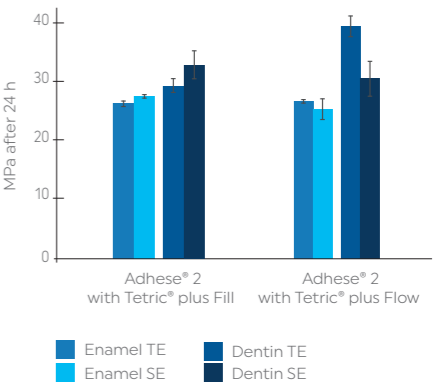


Integrated desensitizing effect

High bond strength for greater confidence

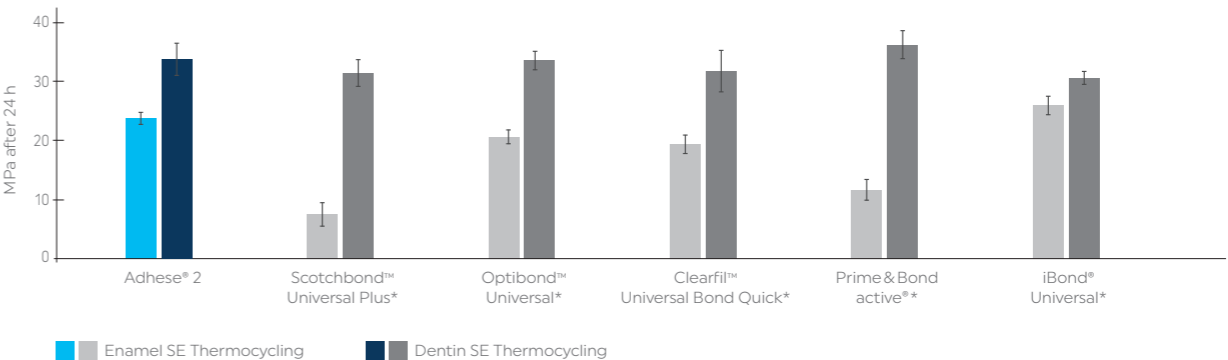
Adhese® 2 achieves reliable bond strength values (> 25 MPa) on enamel and dentin^[10] – irrespective of the etching protocol used. The material's high moisture tolerance ensures consistently strong adhesion, both on dry and moist dentin. Adhese 2 delivers the same bonding performance as the clinically proven Adhese Universal and offers bond strength values comparable to established multi-component gold-standard systems.

Shear bond strength values on enamel and dentin when using the self-etch technique (SE) and the etch-and-rinse technique (Total Etch, TE)



Source: R&D, Ivoclar Vivadent AG, Schaan, 2024

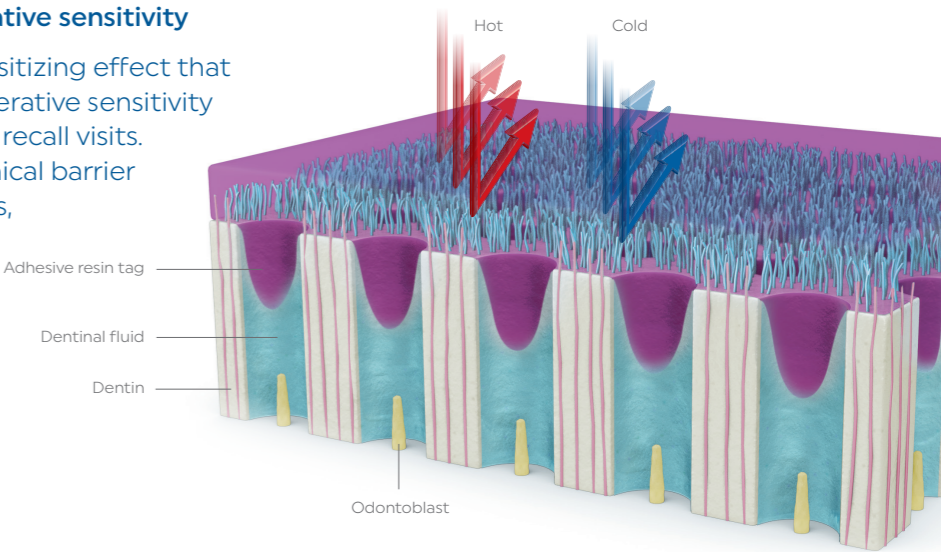
Shear bond strength values on enamel and dentin with Tetric® PowerFill after application of the self-etch technique (SE) and 10,000 thermocycles at 5/55°C



Source: R&D, Ivoclar Vivadent AG, Schaan, 2024.
* No registered trademarks of Ivoclar Vivadent AG.

Significantly reduced risk of postoperative sensitivity

Adhese 2 features an integrated desensitizing effect that significantly reduces the risk of postoperative sensitivity and minimizes the need for associated recall visits. The universal adhesive forms a mechanical barrier that effectively seals the dentin tubules, rendering the use of an additional desensitizing agent unnecessary.



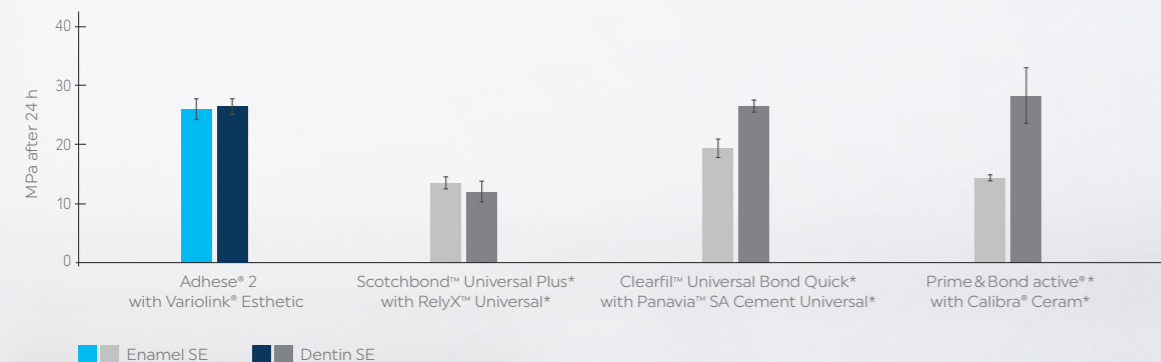
[10] In combination with Tetric plus Fill, Tetric plus Flow and Variolink Esthetic DC

Strong in any situation

The innovative blue DC cannula expands the range of clinical applications for Adhese® 2 in the VivaPen, particularly for the adhesive cementation of indirect restorations, when self-curing is necessary or preferred.

In combination with Variolink® Esthetic DC, the adhesive achieves predictable, high bond strength values on both enamel and dentin, regardless of the etching protocol used – ensuring long-lasting reliable restorations.

Shear bond strength values for indirect restorations on enamel and dentin using the self-etch technique (SE)



Source: R&D, Ivoclar Vivadent AG, Schaan, 2024.

* No registered trademarks of Ivoclar Vivadent AG.

Precise cementation and esthetic outcome

Applying the adhesive in the self-cure mode with the blue DC cannula improves the accuracy of fit when placing indirect restorations, as potential pooling does not compromise the result.

Given the low film thickness (approx. 10 µm), Adhese 2 ensures a precise fit even after light-curing for indirect restorations and seamless integration of direct restorations for optimal esthetic results.

Dual-curing
without
separate
DC activator

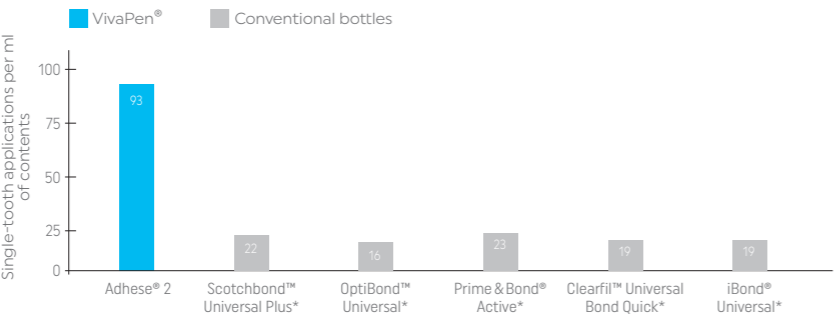


Enhanced workflow efficiency

Efficient VivaPen

Precise dispensing with the VivaPen®

Thanks to the intuitive click mechanism, the required amount of adhesive can be dispensed precisely and sparingly and there is no need for mixing wells or extra steps. This considerably reduces material waste and lowers your costs with every application.



The measurements were taken using gravimetric methods and simulating daily clinical use.
Source: Berndt & Partner, VivaPen Benchmarking Study, Study Report, April 2022.

* No registered trademarks of Ivoclar Vivadent AG.

Easier than ever

For direct and indirect restorations

Because of its dual-cure properties, Adhese® 2 offers maximum flexibility in clinical applications: With the blue DC cannula, it is compatible with light-cure, self-cure and dual-cure composites – without the need for an additional activator.

5-second cure

Fast, reliable cure

Adhese 2 can be cured with conventional curing lights (with a light intensity of 2000 mW/cm²) in just 5 seconds.

For restorations of Class I and II cavities in permanent posterior teeth with occlusal light curing using the Bluephase PowerCure with a light intensity of 3000 mW/cm², the curing time can be reduced to only 3 seconds.

Up to **4x**
more single-tooth applications
per ml of contents compared
to conventional bottles^[11,12]



Delivery forms

Adhese 2 VivaPen Kits	
757027	Adhese 2 LC VivaPen Kit (1x 2ml) 100 VivaPen snap-on cannulas (LC)
757028	Adhese 2 DC VivaPen Kit (1x 2ml) 100 VivaPen snap-on cannulas (DC)
757026	Adhese 2 LC/DC VivaPen Starter Kit (1x 0.5ml) 10 VivaPen snap-on cannulas (LC), 10 VivaPen snap-on cannulas (DC)

Adhese 2 is also available in a bottle and in Free Stand Single Dose units, either with endo brushes or regular brushes.

[11] Berndt & Partner, VivaPen Benchmarking Study, Study Report, April 2022.
[12] Holaschke S, VEA Verification Report, Ivoclar Vivadent, 2021.

Direct restorative treatment for efficient esthetics

Our coordinated products for direct restorative treatments allow you to fabricate high-quality, esthetic restorations with increased efficiency.



Isolate

Relaxed and efficient treatments with OptraGate 2



Bond

Universal bonding with Adhese 2 in the efficient VivaPen



Restore

Count on Tetric plus – the new simplified universal composite



Cure

High curing performance delivered by Bluephase PowerCure



Polish

Shiny surfaces produced with OptraGloss



Care

Effective prevention with Fluor Protector S